

GRADE No.	N12	N11	N10	N9	N8	N7	N6	N5	N4	N3	N2	N1
VALUE	50	25	12.5	6.3	3.2	1.6	0.8	0.4	0.2	0.1	0.05	0.025
SYMBOL												
SURFACE ROUGHNESS												

NOTE

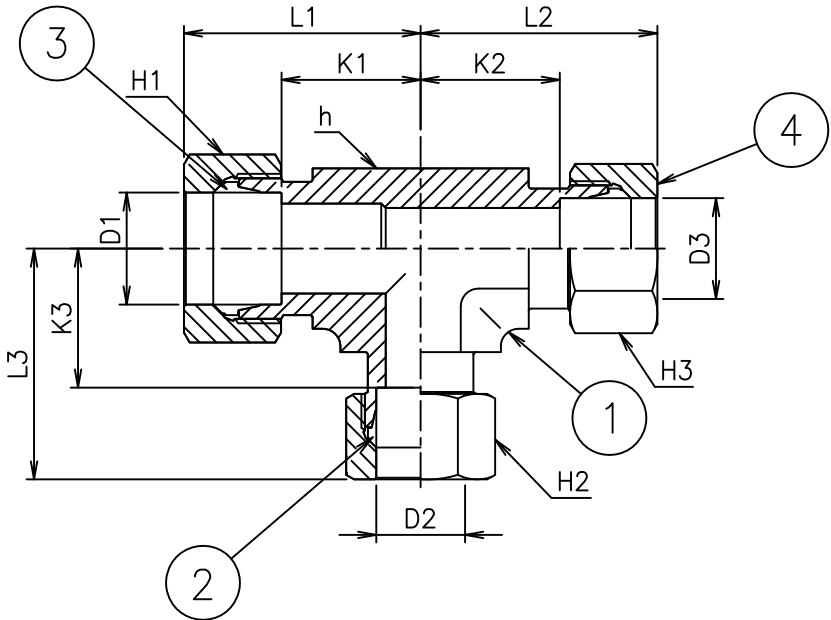
THE STRENGTH AND NO AIR LEAKAGE SHALL BE GUARANTEED UNDER THE CONDITION OF NO. 1 AND 2.

1. TEMPERATURE RANGE : -40 - +80°C

2. OPERATING PRESSURE : MAX. 80 BAR

SPECIFICATION: DIN2353 (ISO8434-1)

- SHALL BE APPLIED FOR DIMENSIONS NOT SPECIFIED AT DRAWING



MACHINING DEVIATIONS FOR LINEAR DIMENSIONS	RANGE	0 - 6	6 - 30	30 - 120	120 - 315	315-1000	1000-2000	2000-4000	ABOVE 4000
	TOLERANCE	±0.1	±0.2	±0.3	±0.5	±0.8	±1.2	±2	±3
FOR DIMENSIONAL TOLERANCES OF SHEET METAL PARTS AND WELDED STRUCTURES, REFER STD. RD-227									
UNSPECIFIED TOLERANCE FOR LINEAR AND ANGULAR DIMENSIONS REF. IS 2102 (PT-1) (MEDIUM)									
VALUES OF SURFACE TEXTURE SHALL BE AS PER COMPANY STD DS. 1012.C.						PROTO / PILOT / PRODUCTION			
QUALITY OF WELD JOINTS REF, RD-230 MEDIUM									

PART NO.	TUBE O.D(mm)			WIDTH ACROSS FLAT				L1	L2	L3	K1	K2	K3
	D1	D2	D3	H1	H2	H3	h						
555-60398	22	22	10	36	36	19	27	44	44	43	27.5	27.5	28

UNCONTROLLED COPY

4	1	909-60709	SLEEVE		SUS316	
3	2	909-60711	SLEEVE		SUS316	
2	3		NUT		SUS316	
1	1		BODY		SUS316	
SL No.	QTY	DRG. / STOCK No.	DESCRIPTION	SIZE	COMPANY STD/IS STD	Wt.Kg.
		DETAIL PARTS			MATERIAL	
			PRODUCT	JAIPUR METRO CAR		
				SURFACE TREATMENT		
	</					